



iTwinkle^{LIGHT}™ Pre-Lit Tree

IMPORTANT SAFETY INSTRUCTIONS

50 LED G35 lights with 450 Constant ON mini lights iTwinkle light show
Item Number: 00686, 00687 UL String Model Nos.: NHI-G35-50,
CFPS(I)-100/2F(0.6), CFPS(I)-50(0.3) When using electrical products, basic precautions should always be followed including the following:

READ AND FOLLOW ALL SAFETY INSTRUCTIONS

- This is an electrical product - not a toy! To avoid the risk of fire, burns, personal injury and electric shock it should not be played with or placed where small children can reach it.
- Do not use seasonal products outdoors unless marked suitable for indoor and outdoor use. When products are used in outdoor applications, connect the product to a Ground Fault Circuit Interrupting (GFCI) outlet. If one is not provided contact a qualified electrician for proper installation.
- This seasonal use product is not intended for permanent installation or use.
- Do not mount or place near gas or electric heaters, fireplaces, candles or other similar sources of heat.
- Do not secure the wiring of the product with staples or nails, or place on sharp hooks or nails.
- Do not let lamps rest on the supply cord or on any wire.
- Unplug the product when leaving the house, when retiring for the night, or if left unattended.
- Do not use this product for other than its intended use.
- Do not hang ornaments or other objects from cord, wire, or light string.
- Do not place lighting string on carpeting, drapes, furniture or allow it to contact vinyl siding while the power is on.
- Do not perform any maintenance or troubleshoot for bad/broken lamps while the power is on.
- Do not close doors or windows on the product or extension cord as this may damage the wire insulation.
- Do not cover the product with cloth, paper or any material not part of the product when in use.
- This product has a polarized plug (one blade is wider than the other) as a feature to reduce the risk of electric shock. This plug will fit in a polarized outlet only one way. If the plug does not fit fully in the outlet, reverse the plug. If it still does not fit, contact a qualified electrician. Do not use with an extension cord unless plug can be fully inserted. Do not alter or replace the plug.
- This product is equipped with push-in type lamps. Do not twist lamps
- This product employs overload protection (fuse). A blown fuse indicates an overload or short-circuit situation. If the fuse blows, unplug the product from the outlet. Also, unplug any additional strings or products that may be attached to the product. Replace the fuse as per the User Servicing instructions (follow product marking for proper fuse rating) and check the product. If the replacement fuse blows, a short-circuit may be present and the product should be discarded.
- Read and follow all instructions that are on the product or provided with the product.

SAVE THESE INSTRUCTIONS

USE AND CARE INSTRUCTIONS

- When the product is placed on a live tree, the tree should be well maintained and fresh. Do not place on live trees in which the needles are brown or break off easily. Keep the tree holder filled with water.

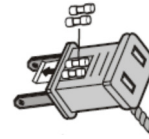
USE AND CARE INSTRUCTIONS (Continued)

- If the product is placed on a tree, the tree should be well secured and stable.
- Before using, or reusing, inspect product carefully. Discard any products that have cut, damaged or frayed wire insulation or cords, cracks in the lampholders or enclosures, loose connections, or exposed copper wire.
- When storing the product, carefully remove the product from wherever it is placed, including trees, branches, or bushes, to avoid any undue strain or stress on the product conductors, connections and wires.
- When not in use, store neatly in a cool, dry location protected from sunlight.

USER SERVICING INSTRUCTIONS

String Set Fuse Replacement:

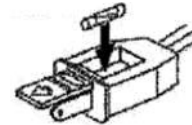
- Before changing fuses, make sure the set is unplugged.
- Grasp plug and remove from the receptacle or other outlet device. Do not unplug by pulling on cord.
- Using a flathead screwdriver, open fuse cover. Slide open the fuse access cover on top of attachment plug towards blades.
- Remove fuses carefully.
- Risk of fire. Replace fuse only with 3 Amp, 125 Volt fuse (provided with product).
- Close fuse cover. Slide closed the fuse access cover on top of attachment plug. Make sure door is fully closed and fuses are completely covered.
- Risk of fire. Do not replace attachment plug. Contains a safety device (fuse) that should not be removed. Discard product if the attachment plug is damaged.



Short and Long Extension Cord Fuse Replacement:

Replace the fuse.

- Grasp the plug and remove from the receptacle or other outlet device. Do not unplug by pulling on cord.
- Using a flathead screwdriver, open fuse cover. Slide open the fuse access cover on top of attachment plug towards blades.
- Remove fuses carefully.
- Risk of fire. Replace fuse only with 5 Amp, 125 Volt fuse for the short extension cord (provided with product). For long extension cord replace fuse only with 7 Amp, 125 Volt fuse (provided with product).
- Close fuse cover. Slide closed the fuse access cover on top of attachment plug. Make sure door is fully closed and fuses are completely covered.
- Risk of fire. Do not replace attachment plug. Contains a safety device (fuse) that should not be removed. Discard product if the attachment plug is damaged.



Install Class 2 Power Supply To String:

NOTE: Use only this GE branded, Class 2 Power Supply, Model SA3A-050-3000, manufactured by TDC that was provided with this product. **DO NOT** use this adapter with any other product.

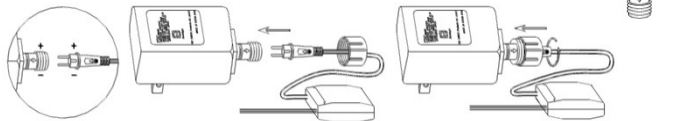



Fig. 1

Fig. 2

Fig. 3

- Remove the Power Supply from its packing box.
- The LED string is fitted with a 2-pronged fitting.
- Align the notch in fitting with the inner tab on end of Power Supply {Fig. 1}
- Fully insert the fitting into the Power Supply {Fig. 2}
- Screw the collar completely onto the Power Supply turning clockwise {Fig. 3}

WARNING:

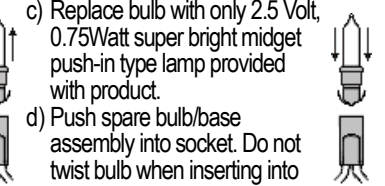
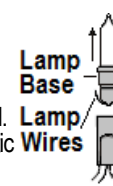
- This string contains two different types of Replaceable bulbs - steady-illuminating and fuse. **REPLACEABLE FUSED BULBS** are identified with white bases. There is one fuse bulb for each lighted circuit of 50 bulbs. Always replace burned-out bulbs promptly. If a number of bulbs are burned out, extra stress is put on the remaining bulbs in the **REPLACEABLE** circuit. This may cause additional bulbs to burn out **FUSED BULBS** prematurely. When a fuse bulb fails the entire circuit will **identified with a** not light. 
- Risk of fire. This product employs overload protection (fuse bulb) in each series circuit to provide overload protection in addition to the fuse(s) located in the plug. Do not replace the fuse bulb contained in this set with any other type of bulb. Use only spare fuse bulbs provided with this product.

Note: G35 LED's are non-replaceable. Tampering with this set voids the warranty.

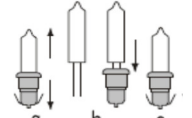
Replace Steady Bulb: Before changing bulbs, make sure set is unplugged.

NOTE: Steady and Fuse bulbs are not interchangeable.

- Grasp plug and remove from the receptacle or other outlet device. Do not unplug by pulling cord.
- Hold bulb by the plastic base and pull bulb/base straight out of socket.
- Replace bulb with only 2.5 Volt, 0.75Watt super bright midget push-in type lamp provided with product.
- Push spare bulb/base assembly into socket. Do not twist bulb when inserting into socket. If bulbs are twisted, part of the set will not light.



If the spare bulbs provided with the product have no plastic base or the plastic base does not fit, first follow a)-b) above. Then 1) Remove the old bulb by straightening the bulb wires and pulling bulb straight from the base. (**Fig. a**), 2) Replace the new bulb by straightening the bulb leads and aiming each wire into a separate hole in the plastic base (**Fig. b**), 3) Make sure each bulb lead comes out an exit opening at the bottom of the plastic base. Now bend each lead up such that each bulb lead fits closely against the narrow side and in the center of the plastic base (**Fig. c**).



Replace Fuse Bulb:

NOTE: Fuse bulbs are secured in the base with adhesive. Do not attempt to remove. Remove old fuse bulb and replace with only 2.5 Volt, 0.75Watt fuse bulbs provided with product.

CAUTION:

- To reduce the risk of fire and electric shock:
 - Do not install on trees having needles, leaves or branch coverings of metal or materials which look like metal, and
 - Do not mount or support strings in a manner that can cut or damage wire insulation.
- To reduce the risk of overheating, replace burned-out lamps promptly. Use 2.5 Volt, 0.75Watt lamps only.
- This Pre-Lit tree is rated 339 Watts, do not overload.

Indoor Use Only

Printed in China



IMPORTANT! Read Carefully Keep for future use

7.5 ft. / 2.29 m Pre-Lit Christmas Tree

Nicolas Holiday Inc. thanks you for your purchase of this pre-lit Christmas tree. With proper use and care, your tree will provide years of use and memories. Carefully follow the instructions below on how to assemble and disassemble your tree.

Before you Begin:

- * The tree needs to be placed in a clear area, on a flat surface with no obstructions.
- * Remove and unwrap all parts. Retain shipping carton for future storage.

Preassembly:

- * Refer to the iTwinkle TREE™ Assembly Diagram.
- * Loosen thumbscrew in stand for legs to open and pole to insert.
- * Place stand where desired as assembled tree is heavy to move.

Disclaimer: DO NOT USE OR INSTALL ANY ADDITIONAL CHRISTMAS LIGHTING OR ORNAMENTATION THAT IS POWERED BY A LIGHT BULB SOCKET. DOING THIS MAY RESULT IN DAMAGE TO YOUR CHRISTMAS TREE OR CAUSE PERSONAL INJURY. DOING THIS, WILL RESULT IN A VOID OF THE LIMITED WARRANTY OF THIS PRODUCT.

This device complies with Part 15 of the FCC Rules.

Operation is subject to the following two conditions:

- this device may not cause harmful interference, and
- this device must accept any interference received, including interference that may cause undesired operation.

NOTE: This equipment has been tested and found to comply with the limits for Class B digital device, pursuant to Part 15 of the FCC Rules. These limits are designed to provide reasonable protection against harmful interference in a residential installation. This equipment generates, uses and can radiate radio frequency energy and, if not installed and used in accordance with the instructions, may cause harmful interference to radio or television reception, which can be determined by turning the equipment off and on, the user is encouraged to try to correct the interference by one or more of the following measures:

- * Reorient or relocate the receiving antenna.
- * Increase the separation between the equipment and the receiver.
- * Connect the equipment into an outlet on a circuit different from that to which the receiver is connected.
- * Consult the dealer or an experienced radio/TV technician for help.

FCC Caution: Any Changes or Modifications not expressly approved by the party responsible for compliance could void user's authority to operate this equipment. This transmitter must not be co-located or operating in conjunction with any other antenna or transmitter.

Radiation Exposure Statement:

This equipment complies with FCC radiation exposure limits set forth for an uncontrolled environment. This equipment should be installed and operated with minimum distance 7.8 in / 20cm between the radiator & your body.

Trouble shooting Tips:

If tree does not illuminate, the tree may be plugged into a controlled wall outlet. Make sure the switch is turned ON. If a tree section does not light, check:

- * Sections A, B or Treetop: Recheck all factory and your assembly connections.
- * If a portion of a section does not light, check for loose lamps or missing mini lamps or fuses. Check that the connector on the plug adapter is fully secured.

iTwinkle™ LIGHT Tree Assembly Diagram



6. Holding the treetop with one hand gently pull down the outer layer of branches. Then align the treetop post to the top of the middle section and insert fully. (See picture to left)



5. Untie the **RED** twist-tie to release the branch panels. Follow step 2.

3. Assemble the middle section after first removing the green protective cap.
NOTE: On a bottom branch near the pole is a special male LED connector. See insert at top.

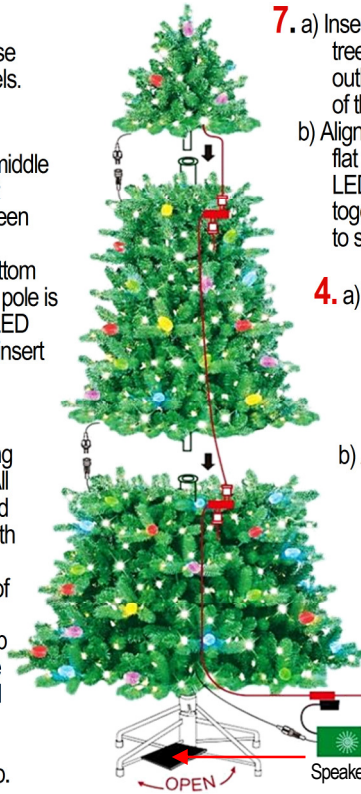
2. Untie the **RED** twist-tie releasing the branches. All branches should fall into place with a gentle pull on the outer layer of branches.
NOTE: On a top branch near the pole is a special female LED Connector. See insert at top.

1. Open the tree stand. Remove the protective red cap from the bottom section, insert pole into the stand and tighten the screw.
NOTE: Unpack and place the speaker on the stand's bracket. Hold until Step 8.

7. a) Insert the plug from the treetop into the unused outlet on extension cord of the middle section.
b) Align the 3 prongs and flat area. Fully insert the LED connectors together. Twist cap fully to secure.

4. a) Insert the plug from extension cord of the middle section into the unused outlet on extension cord of the bottom section.
b) Align the 3 prongs and flat area. Fully insert the LED connectors together. Twist cap fully to secure.

8. Insert the plug from the Note in Step 1 directly into an electrical wall outlet to turn the tree lights on.



If needed, adjust branch tips to make the tree look fuller.

Congratulations!

Your lighted tree is complete and ready to use with your selected device.

NOTES:

- * The LED reflectors are not removable.
- * The LED are not replaceable.

Most Frequently Asked Questions

- Q. May I add a lighted decorative tree top to my tree?
A. Yes, There is an outlet at the back of the bladed plug of the tree top.
- Q. May I put blinking or flashing bulbs on my tree?
A. No
- Q. May I add extra string sets to my pre-lit tree?
A. No
- Q. May I put my pre-lit tree outside?
A. No. Pre-lit trees are for indoor use only.
- Q. May I hang glass ornaments on a pre-lit tree?
A. Yes, however do not hang directly on the wires of the lights.
- Q. May I remove a light string bulb and add a pig tailed illuminated or animated ornament or motor?
A. No, removing the bulbs and inserting any additional device into lamp holder will cause the light set to cease to operate and may revoke the limited warranty of this product.

Tree Storage:

Remove the plug from the wall outlet. Starting from the treetop, first remove the plug from the extension cord in section B. Then untwist the securing cap to pull apart the connectors. Lift the treetop straight up from section B.
Step A: Gently and carefully fold the branches up toward the center to avoid bulb damage. Place the treetop into your original shipping carton. Next remove the plug from section B to section A. Set aside after repeating **Step A**. Then while holding the tree pole of section A, loosen the thumb screw located on the tree stand. Remove section A from the tree stand. Repeat **Step A** and place into the carton. To close the tree stand for storage, remove the speaker, loosen thumbscrew and push the legs inward. Place tree stand and section B into the carton. Place the speaker into the carton. Seal the carton closed.

Important: Store your carton neatly in a cool, dry location protected from sunlight to prolong the tree life and keep the light sets in working order.

Spare Parts: Your Tree includes a plastic bag containing spare steady and fuse bulbs, spare 3-amp fuses, as replacements for the lighting strings and (1) 5-amp fuse.

NOTE: The 5-amp spare fuse is ONLY to replace an open fuse in the SHORT extension cord WITHIN the tree section. The spare 7 amp fuse for the LONG extension cord at the BOTTOM of your tree is located within the plug cavity.

If you should have any problems with your tree, or if the tree does not light after assembly, DO NOT return it to the place of purchase. Please refer to the trouble shooting section of this manual or call our toll free number: **1-877-398-7337** and a customer service representative will assist you. Our customer service center is open Monday through Friday 10:00 AM to 7:00 PM EST with additional hours throughout the holiday season. You can also visit us on the web at:

www.geholidaylighting.com

Nicolas Holiday Inc.

9F, No. 37, Guangfu North Rd.
Taipei, Taiwan 10560
All rights reserved.